

MASTER DEVELOPMENT PLANS FOR FORT FLORIDA COMMONS

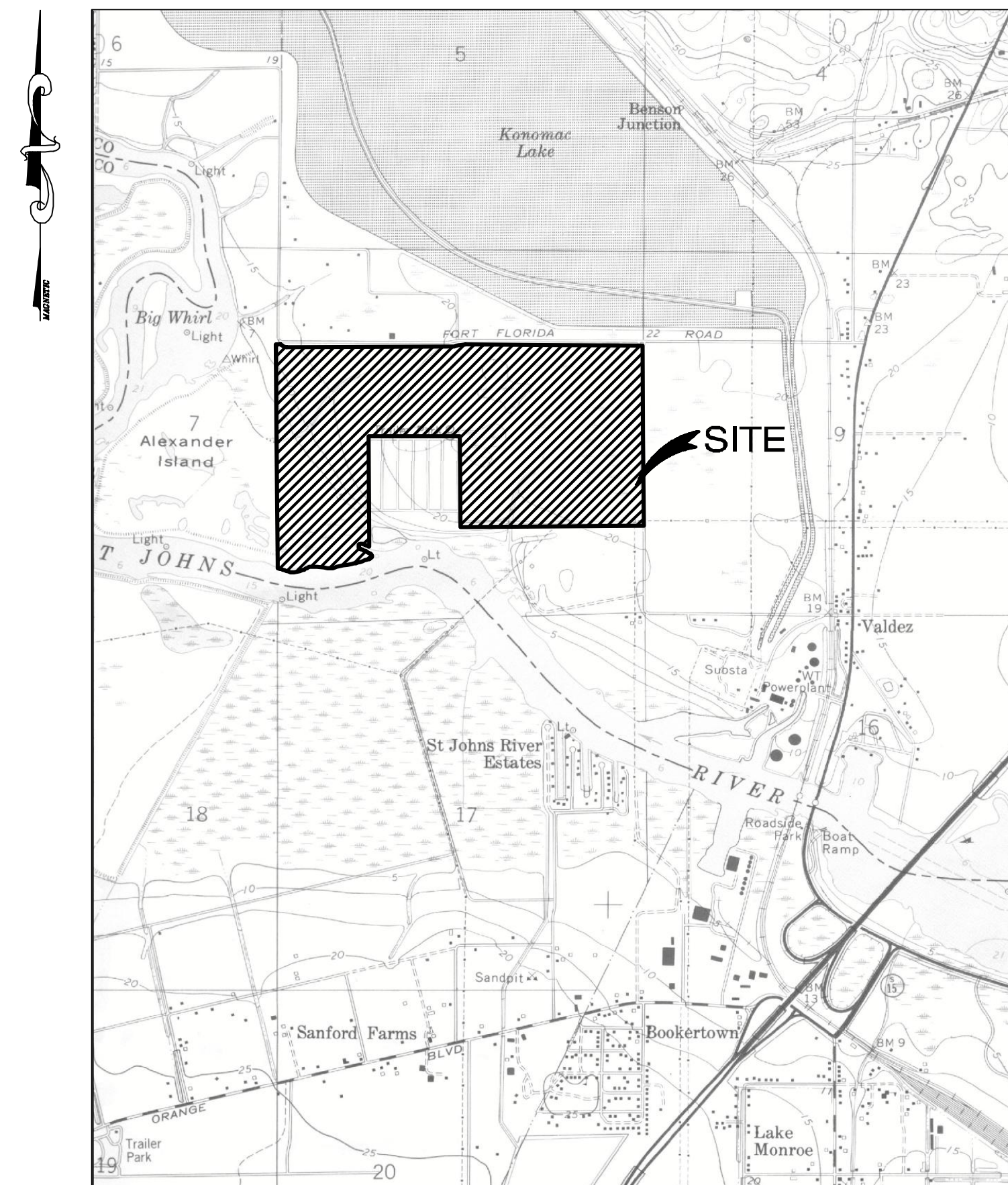
CITY OF DEBARY
VOLUSIA COUNTY, FLORIDA

OWNER: Empire Cattle, LTD
PO Box 342
Deland, Florida 32721
(386) 804-7259 Fax: (800) 373-8460
Steven Costa

ENGINEER and PLANNER: CPH, Inc.
500 West Fulton Street
Sanford, Florida 32771
(407) 322-6841

SURVEYOR: Allen and Company
16 E. Plant Street
Winter Garden, Florida 34787
(407) 654-5355 Fax: (407) 654-5356
Jim Rickman, P.S.M.

ENVIRONMENTAL: CPH, Inc.
500 West Fulton Street
Sanford, Florida 32771
(407) 322-6841 Fax: (407) 330-0639
Amy Wright



VICINITY MAP
Scale: 1"=2000'

SHEET INDEX

- 1. COVER SHEET**
- 2. LAND USE**
- 3. PEDESTRIAN SYSTEM & OPEN SPACE**
- 4. ROADWAY AND UTILITY PLAN**
- 5. STREET TYPICAL SECTION**

NO.	DATE	PLAN REVISION	APPROVED	NO.	DATE	PLAN REVISION	APPROVED

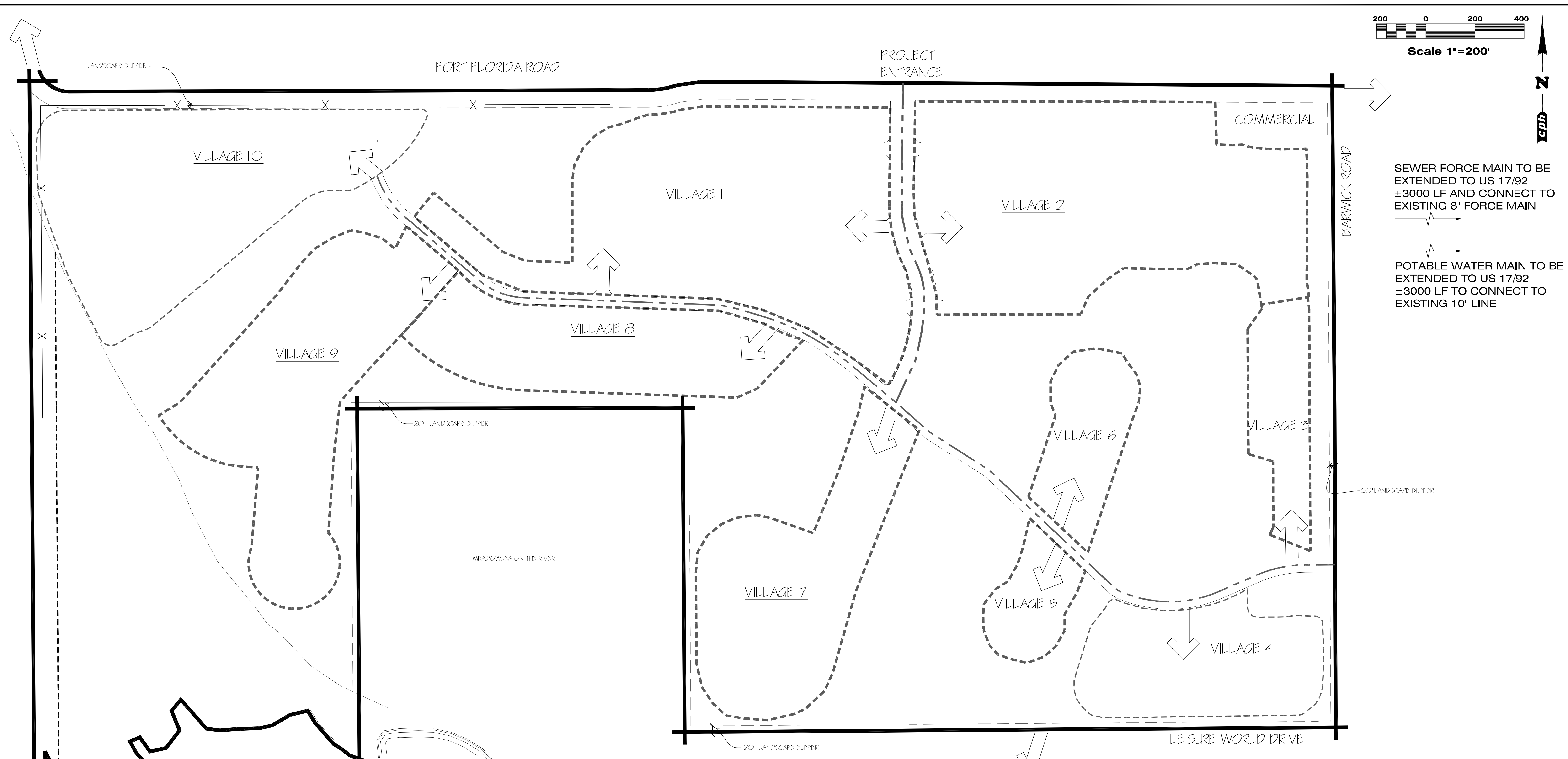
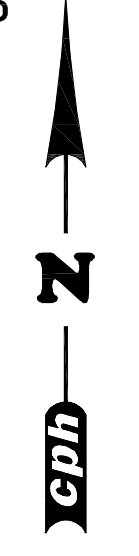


CPH Project No. C9303
File: C9303 cvr.dwg
Date: November, 2015
SHEET 1 OF 4

U:\j\awens\Coral\Save\C9303_cvr.dwg Dec 22, 2015 - 8:04am dbyant



Scale 1"=200'



SEWER FORCE MAIN TO BE EXTENDED TO US 17/92 ±3000 LF AND CONNECT TO EXISTING 8" FORCE MAIN

POTABLE WATER MAIN TO BE EXTENDED TO US 17/92 ±3000 LF TO CONNECT TO EXISTING 10" LINE

VILLAGE	APPROX. AREA	TYPE	MINIMUM LOT SIZE WIDTH	MINIMUM LOT SIZE DEPTH	APPROXIMATE MAXIMUM NUMBER OF UNITS
1	27± ACRES	TOWNHOME / SINGLE FAMILY	25' / 40'	135' / 100'	175±
2	27± ACRES	TOWNHOUSE / SINGLE FAMILY	25' / 40'	135' / 100'	156±
3	5± ACRES	SINGLE FAMILY	50'	100'	25±
4	10± ACRES	SINGLE FAMILY	50'	100'	59±
5	3± ACRES	SINGLE FAMILY	50'	100'	16±
6	5± ACRES	SINGLE FAMILY	50'	100'	24±
7	14± ACRES	SINGLE FAMILY	50'	100'	78±
8	11± ACRES	SINGLE FAMILY	60'	125'	68±
9	17± ACRES	SINGLE FAMILY	60'	125'	50±
10	20± ACRES	SINGLE FAMILY	60'	125'	49±
	2± ACRES	COMMERCIAL			
TOTAL	141± ACRES				MAX. 700 TOTAL UNITS

NOTE: ALL AREAS ± 20%

U:\projects\Costa\Save\C9303 LAND USE.dwg Dec 29, 2015 - 10:22am dbyant

No.	Date	Revision	Approved	No.	Date	Revision	Approved

Designed by: _____
 Drawn by: _____
 Checked by: _____
 Approved by: _____

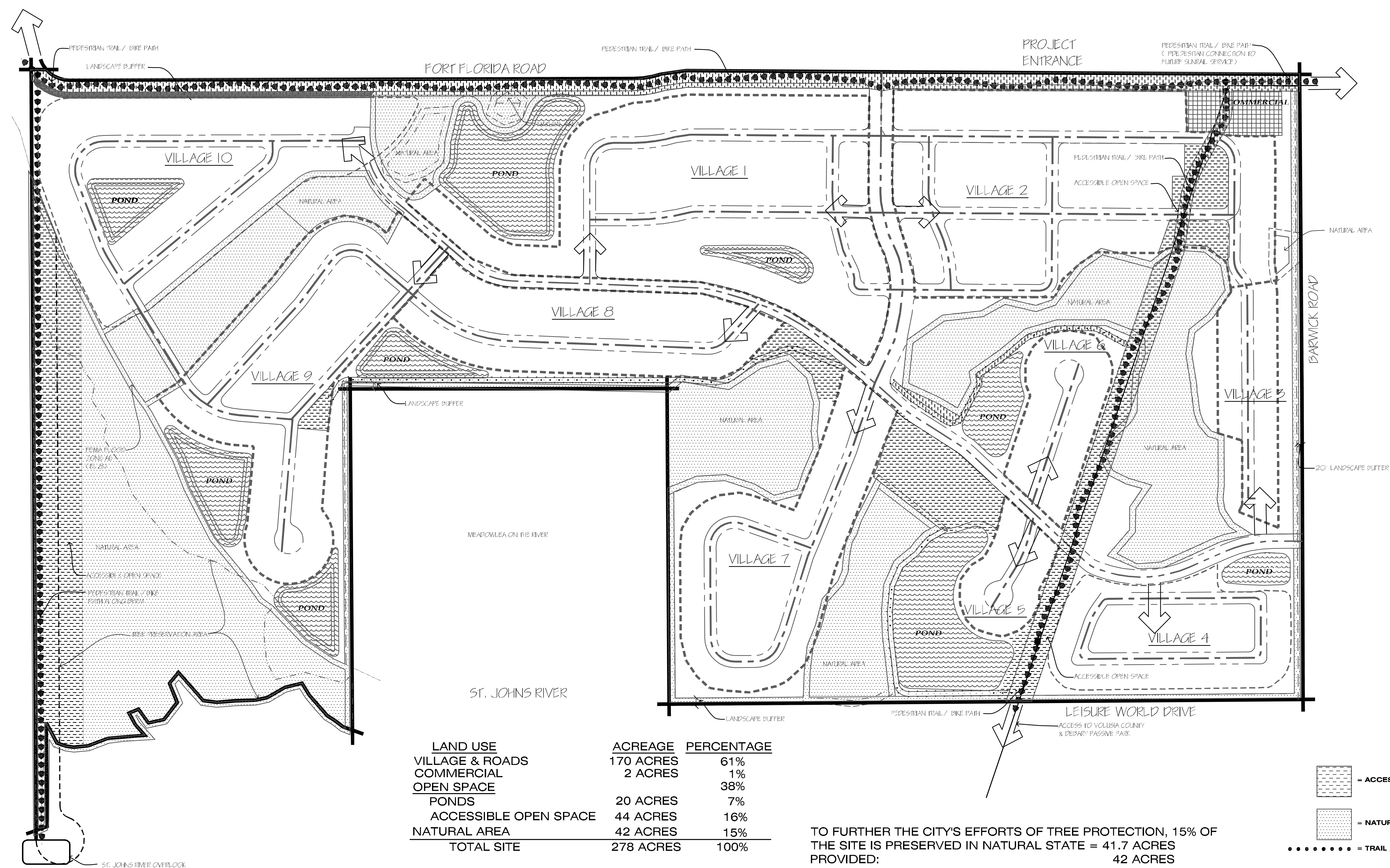
Certificate of Authorization No. 3215

Scale: HORZ.: 1" = 200'
 Date: November, 2015
 Job No. C9303
 File: C9303 LAND USE

FORT FLORIDA COMMONS
DEBARY, FLORIDA

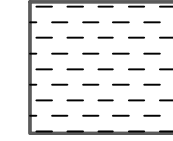
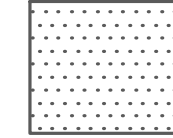



PRELIMINARY PLAN




LAND USE	ACREAGE	PERCENTAGE
VILLAGE & ROADS	170 ACRES	61%
COMMERCIAL	2 ACRES	1%
OPEN SPACE		38%
PONDS	20 ACRES	7%
ACCESSIBLE OPEN SPACE	44 ACRES	16%
NATURAL AREA	42 ACRES	15%
TOTAL SITE	278 ACRES	100%

TO FURTHER THE CITY'S EFFORTS OF TREE PROTECTION, 15% OF THE SITE IS PRESERVED IN NATURAL STATE = 41.7 ACRES PROVIDED: 42 ACRES

-  = ACCESSIBLE OPEN SPACE
-  = NATURAL AREA / WETLAND AREA
-  = TRAIL / BIKE PATH

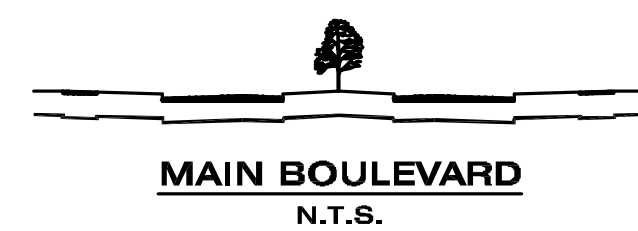
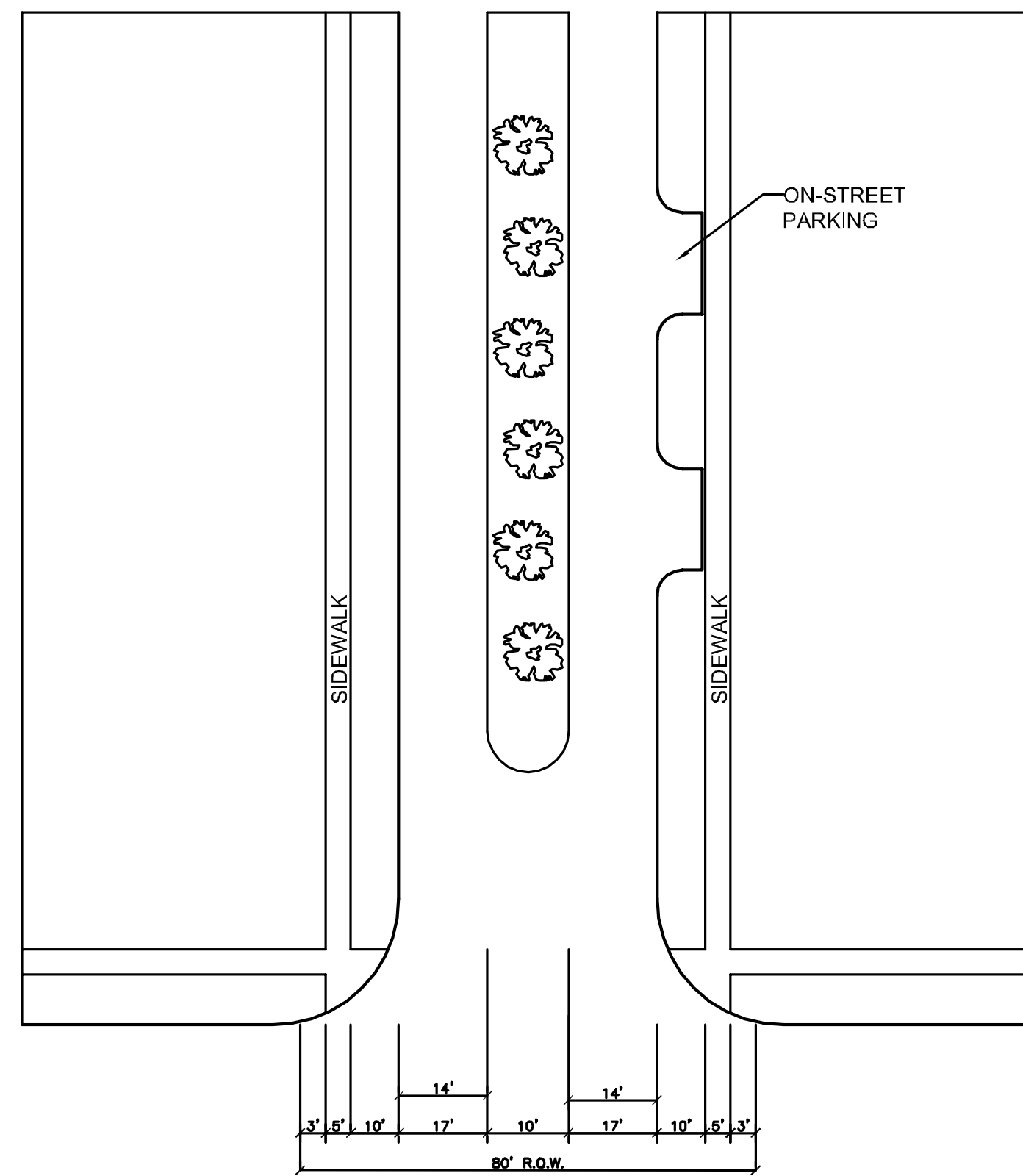
L:\projects\Costa\Sana\C9303 PED TRAIL.dwg Dec 22, 2015 - 8:17am dbyant

No.	Date	Revision	Approved	No.	Date	Revision	Approved
1	11/13/15	REV PER DRC	JDO				

FORT FLORIDA COMMONS DEBARY, FLORIDA	 A Full Service A & E Firm Architects Engineers Environmental Landscape Architects Traffic/Transportation	PEDESTRIAN SYSTEM AND OPEN SPACE	Sheet No. 3
--	---	---	-----------------------

ROADWAY TYPICAL SECTIONS

MAIN BOULEVARD

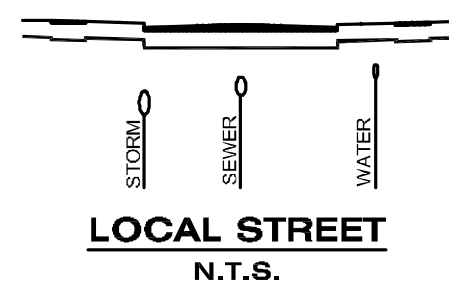
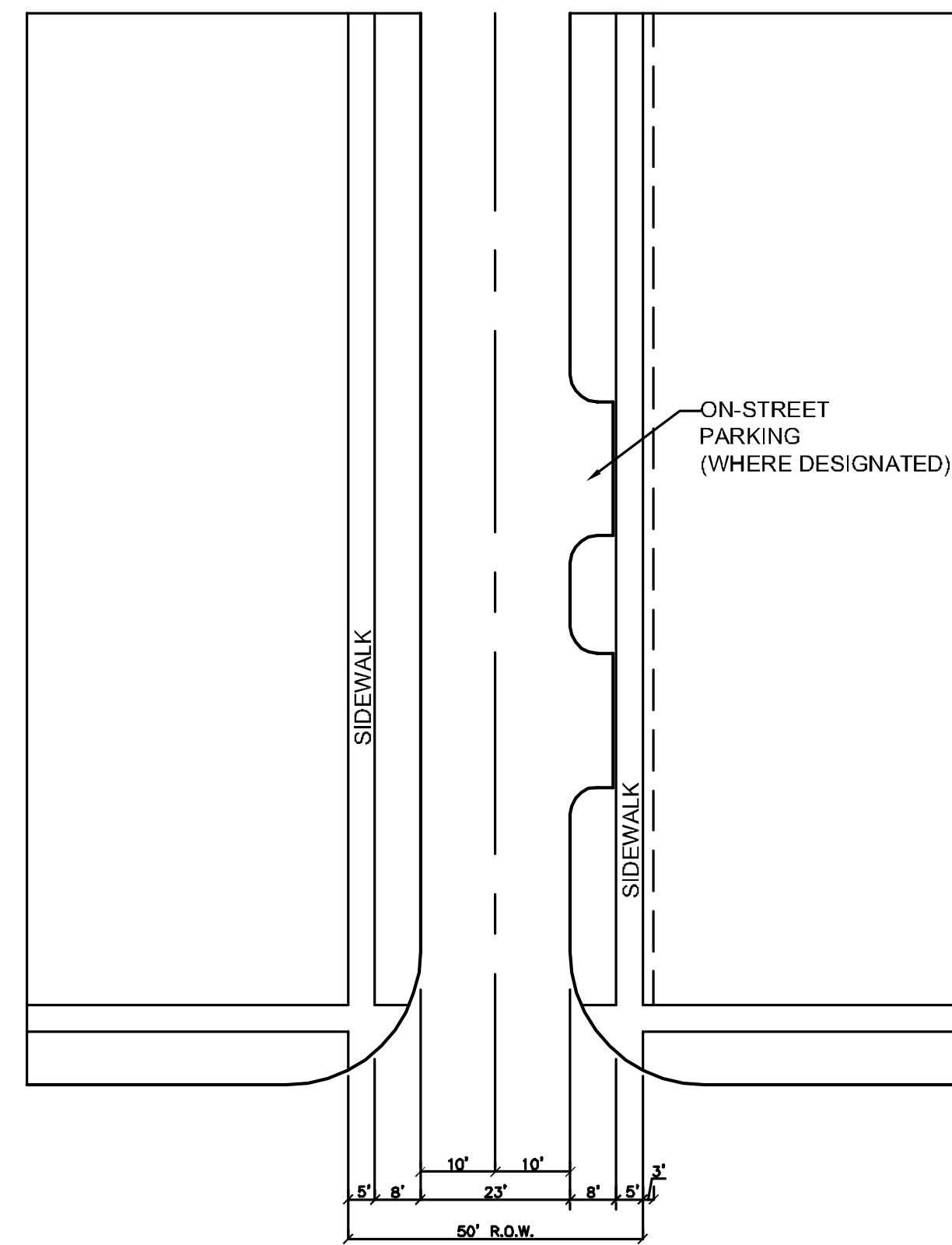


MAIN BOULEVARD
N.T.S.

R.O.W. WIDTH	80'
FACE OF CURB TO FACE OF CURB	17' (both sides)
TRAFFIC LANES	N/A
TRAFFIC LANE WIDTH	14'
PARKING	TOWNHOME SECTION ONLY
PARKING WIDTH	9'
DESIGN SPEED	30 MPH
POSTED SPEED	25 MPH
PARKWAY WIDTH	10' (includes curb)
MEDIAN WIDTH	16'
SIDEWALK WIDTH	5'
CURB RADIUS	25'
STRIPING	YES
LIGHTING	100' ALTERNATING 15' HEIGHT
TREE OFFSET FROM BACK OF CURB	4' MIN. WITH TYPE F CURB 6' MIN. WITHOUT CURB

NOTE: SIDEWALK MAY BE LOCATED IN AN EASEMENT OUTSIDE THE RIGHT-OF-WAY WHERE STREET TREES AND/OR UTILITIES DICTATE.

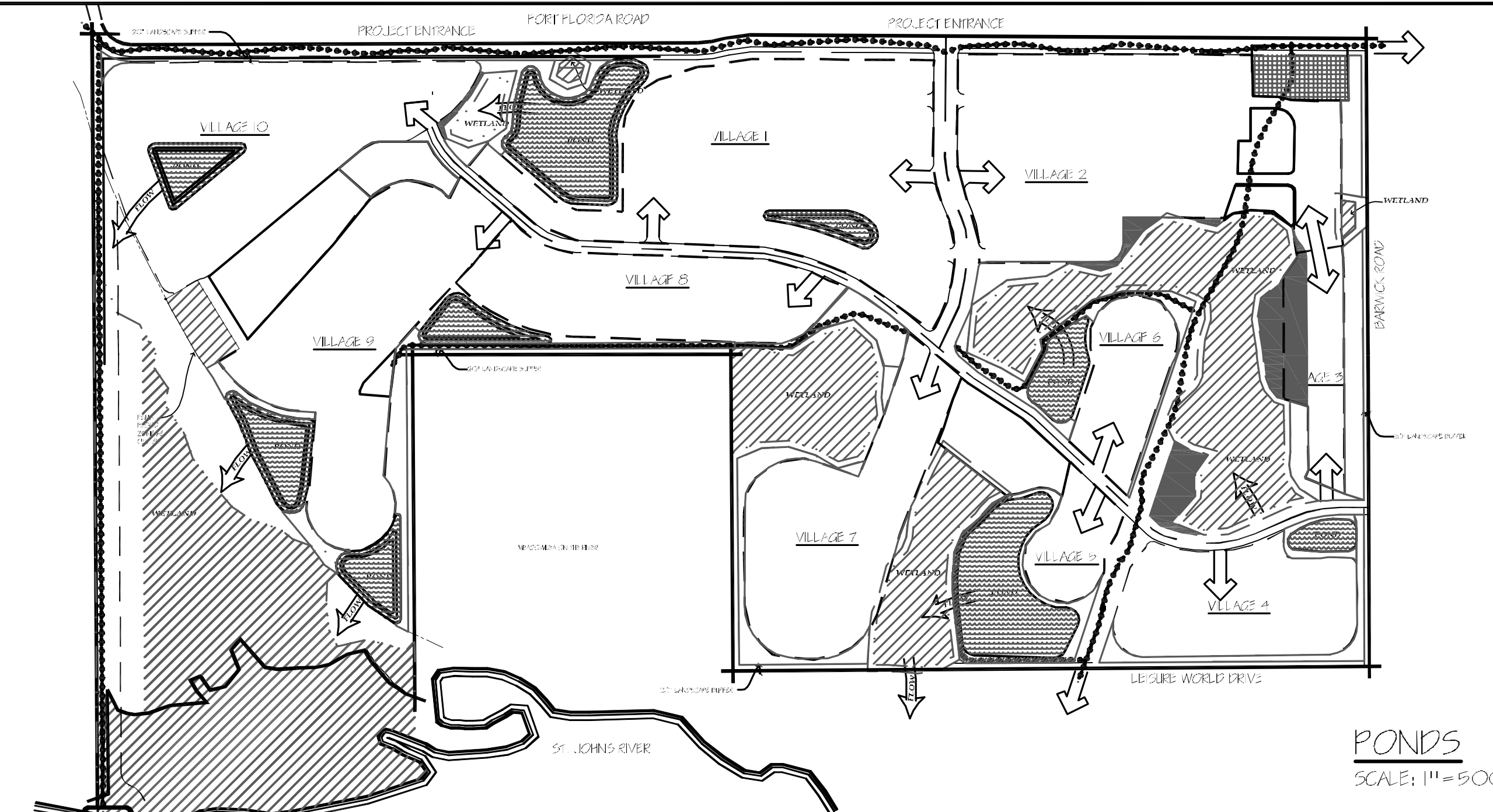
LOCAL STREET



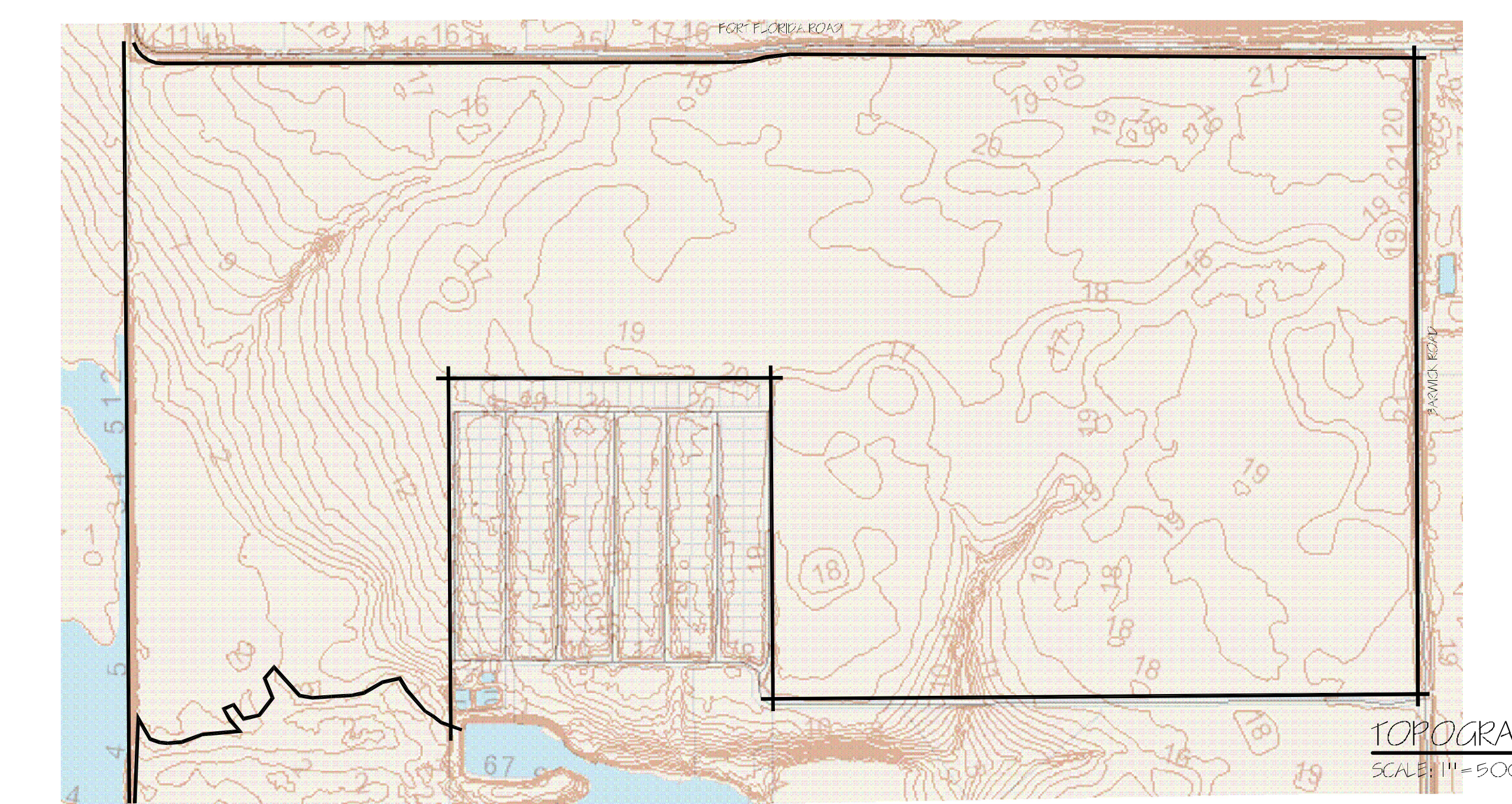
LOCAL STREET
N.T.S.

R.O.W. WIDTH	50'
FACE OF CURB TO FACE OF CURB	23' (includes gutters)
TRAFFIC LANES	TWO WAY
TRAFFIC LANE WIDTH	10'
PARKING	YES
PARKING WIDTH	N/A
DESIGN SPEED	20 MPH
POSTED SPEED	15 MPH
PARKWAY WIDTH	VARIABLES
MEDIAN WIDTH	N/A
SIDEWALK WIDTH	5'
CURB RADIUS	25'
BIKE LANES	NO
STRIPING	NO
LIGHTING	100' ALTERNATING 14' HEIGHT
TREE OFFSET FROM BACK OF CURB	4' MIN. WITH TYPE F CURB 6' MIN. WITHOUT CURB

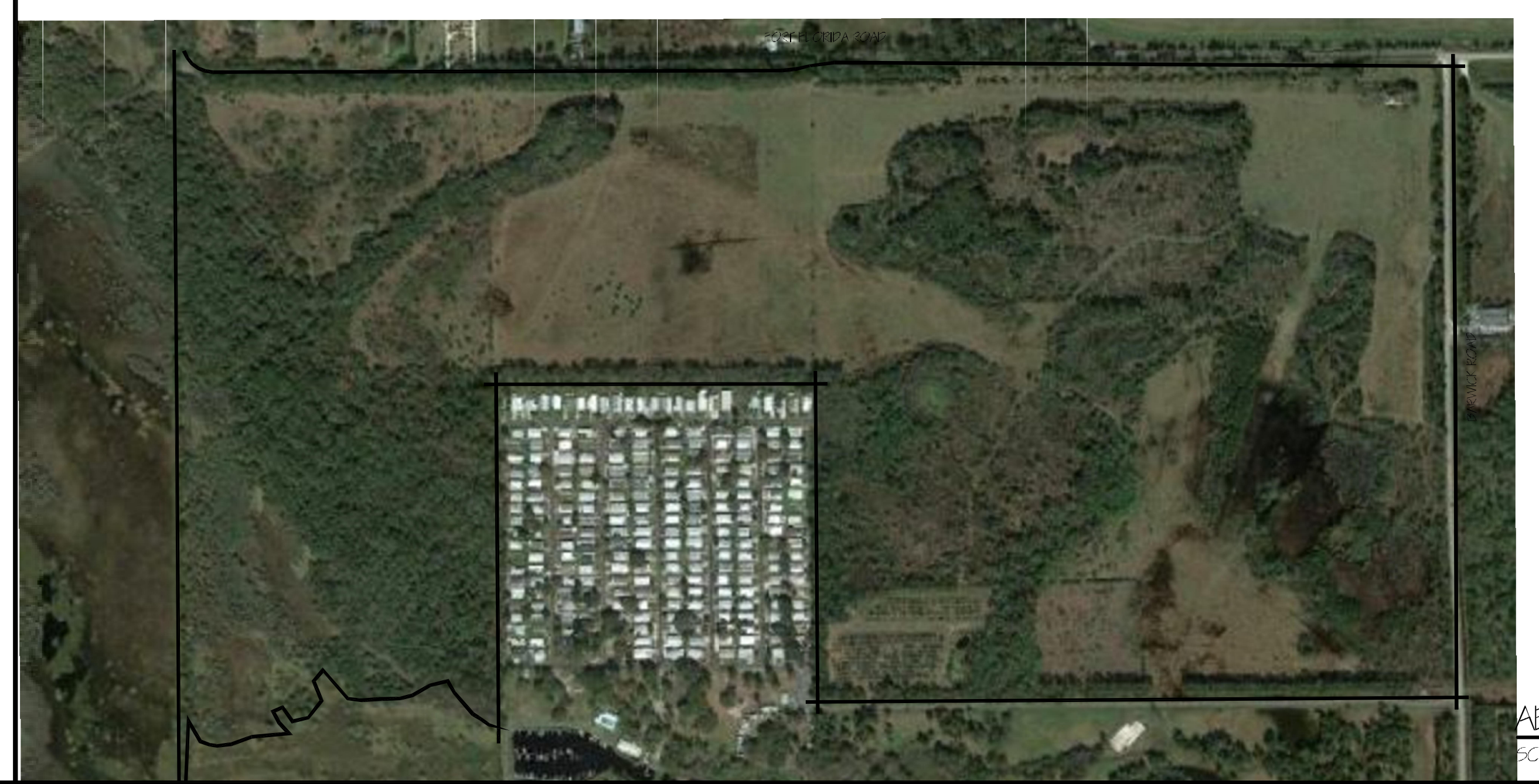
NOTE: SIDEWALK MAY BE LOCATED IN AN EASEMENT OUTSIDE THE RIGHT-OF-WAY WHERE PARKING, STREET TREES AND/OR UTILITIES DICTATE.



PONDS
SCALE: 1" = 500'



TOPOGRAPHIC MAP
SCALE: 1" = 500'



AERIAL MAP
SCALE: 1" = 500'

L:\projects\c9303\ROADWAY.dwg Dec 22, 2015 - 8:18am dbyant

No.	Date	Revision	Approved	No.	Date	Revision	Approved	Designed by:	Scale:
									HORZ.: 1" = 60'
								Drawn by:	Date: November, 2015
								Checked by:	Job No. C9303
								Approved by:	File: C9303 ROADWAY
								Certificate of Authorization No. 3215	

FORT FLORIDA COMMONS
DEBARY, FLORIDA

cph A Full Service A & E Firm
Architects, Engineers, Environmental, Landscape Architects, Traffic/Transportation, M/E/P, Planners, Structural, Surveyors

DETAILS

Sheet No.
4